

Welcome to
Clemton Park Public School's

2020 Kindergarten
Transition
Session 1



Welcome to Country

We acknowledge the traditional custodians of this land, the Bediagal people.

We pay respects to the Elders, past, present and future for they hold the memories, the culture, and the hopes of Aboriginal Australia.

We must always remember that, under this concrete and stone, this is, and always has been traditional Aboriginal land.

Guest Speakers - September 4th

Paul Robinson - Principal (Rel.)

Peta Lloyd - Assistant Principal

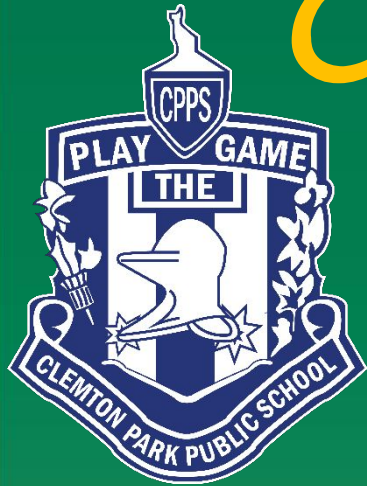
Bec Kay-Barch - Uniform Shop representative

Kerrie Godwin - Home School Liaison Officer

Carol Debs - Council Road Safety Officer

Maria Stavroulakis - Before and After School Care

Meray Parsons - Gowrie



Clemton Park PS
Principal (Rel.)
Paul Robinson



Uniform Shop
Representative
Bec Kay-Barch



SUMMER PACKS ORDER FORM

Parent/Carer Name: _____

Contact Number: _____

Child's Name: _____

Please check your folder for house colour and then circle below.

RED	YELLOW	BLUE	GREEN
-----	--------	------	-------

QTY

BOYS

\$225

Pants	2	Everyday Summer Shorts
Shirt	2	Everyday Short Sleeve Polo
Shirt	1	Friday Sport (K-2) Coloured Tee
Pants	1	Friday Sport (K-2) Shorts
Jacket	1	Everyday Zip Jacket
Hat	1	Everyday Wide Brim Sunhat
Bag	1	Library/Excursion
Bag	1	School Backpack (K-2)

4	6	8	10
4	6	8	10
4	6	8	10
4	6	8	10
4	6	8	10
S	M	L	

GIRLS

\$228

Dress	1	Everyday Summer Dress
Pants	1	Everyday Summer Skort
Shirt	1	Everyday Short Sleeve Polo
Shirt	1	Friday Sport (K-2) Coloured Tee
Pants	1	Friday Sport (K-2) Shorts
Jacket	1	Everyday Zip Jacket
Hat	1	Everyday Wide Brim Sunhat
Bag	1	Library/Excursion
Bag	1	School Backpack (K-2)

4	6	8	10
4	6	8	10
4	6	8	10
4	6	8	10
4	6	8	10
S	M	L	

Cash	<div style="border: 1px solid black; width: 50px; height: 20px; display: inline-block;"></div>	<i>You must provide exact money in the envelope.</i>	OR
CC Number	_____ - _____ - _____		
Expiry Date	_____	CVV Number (3 digits on back of card)	_____

Uniform Shop

The uniform shop is located in the Bexley Road car park and is open every Thursday between 8.30am - 9:30am.

Included in the Kindergarten pack is a uniform order form detailing the packages available for purchase.

Uniform Shop

For our new kindergarten parents you can purchase the uniform as follows:

Option 1 - Place your order form & payment, cash, cheque or credit card details, in an envelope & place it in the Money Box located in the Administration office before 9am Monday to Friday

Option 2 - Place orders in the box here on the stage.

For current CPPS families, your order can be delivered to your older child's class on Thursdays

Uniform Orders at School

For new CPPS families, if you order at the first two transition days, you can receive your order on the third transition day

Wednesday, September 18, 2019

Option 3 - Purchase your uniform from the Uniform Shop on Thursdays during school terms from 8:30am - 9:30am.

The uniform shop will be open until December 5, 2019 and reopen January 29, 2020



Home School
Liaison Officer
Kerrie Godwin

Compulsory School Attendance

Information for parents

Education for your child is important and regular attendance at school is essential for your child to achieve their educational best and increase their career and life options. NSW public schools work in partnership with parents to encourage and support regular attendance of children and young people. When your child attends school every day, learning becomes easier and your child will build and maintain friendships with other children.

What are my legal responsibilities?

Education in New South Wales is compulsory for all children between the ages of six years and below the minimum school leaving age. The *Education Act 1990* requires that parents ensure their children of compulsory school age are enrolled at, and regularly attend school, or, are registered with the Board of Studies, Teaching and Educational Standards for homeschooling.

Once enrolled, children are required to attend school each day it is open for students.

The importance of arriving on time

Arriving at school and class on time

- ensures that students do not miss out on important learning activities scheduled early in the day
- helps students learn the importance of punctuality and routine
- gives students time to greet their friends before class
- reduces classroom disruption.

Lateness is recorded as a partial absence and must be explained by parents.

What if my child has to be away from school?

On occasion, your child may need to be absent from school. Justified reasons for student absences may include

- being sick, or having an infectious disease
- having an unavoidable medical appointment
- being required to attend a recognised religious holiday
- exceptional or urgent family circumstance e.g. attending a funeral.

Following an absence from school you must ensure that within 7 days you provide your child's school with a verbal or written explanation for the absence. However, if the school has not received an explanation from you within 2 days, the school may contact you to discuss the absence.

Principals may decline to accept an explanation that you have provided if they do not believe the absence is in the best interest of your child. In these circumstances your child's absence would be recorded as unjustified. When this happens the principal will discuss their decision with you and the reasons why.

Principals may request medical certificates or other documentation when frequent or long term absences are explained as being due to illness. Principals may also seek parental permission to speak with medical specialists to obtain information to collaboratively develop a health care plan to support your child. If the request is denied, the principal can record the absences as unjustified.

Travel

Families are encouraged to travel during school holidays. If travel during school term is necessary, discuss this with your child's school principal. An *Application for Extended Leave* may need to be completed. Absences relating to travel will be marked as leave on the roll and therefore contribute to your child's total absences for the year.

In some circumstances students may be eligible to enrol in distance education for travel periods over 50 school days. This should be discussed with your child's school principal.





If a student misses as little as 8 days in a school term, by the end of primary school they'll have missed over a year of school.

My child won't go to school. What should I do?

You should contact the principal as soon as possible to discuss the issue and ask for help. Strategies to help improve attendance may include a referral to the school's learning and support team or linking your child with appropriate support networks. The principal may seek further support from the Home School Liaison Program to develop an Attendance Improvement Plan.

What might happen if my child continues to have unacceptable absences?

It is important to understand that the Department of Education and may be required to take further action where children of compulsory school age have recurring numbers of unexplained or unjustified absences from school.

Some of the following actions may be undertaken:

- Compulsory Schooling Conferences

You may be asked, along with your child, to attend a Compulsory Schooling Conference. The conference will help to identify the supports your child may need to have in place so they attend school regularly. The school, parents and agencies will work together to develop an agreed plan (known as Undertakings) to support your child's attendance at school.

- Application to the Children's Court - Compulsory Schooling Order

If your child's attendance at school remains unsatisfactory the Department may apply to the Children's Court for a *Compulsory Schooling Order*.

The Children's Court magistrate may order a Compulsory Schooling Conference to be convened.

- Prosecution in the Local Court

School and Department staff remain committed to working in partnership with you to address the issues which are preventing your child's full participation at school. In circumstances where a breach of compulsory schooling orders occurs further action may be taken against a parent in the Local Court. The result of court action can be the imposition of a community service order or a fine.

What age can my child leave school?

All New South Wales students must complete Year 10 or its equivalent. After Year 10, and up until they reach 17 years of age, there are a range of flexible options for students to complete their schooling.

Working in Partnership

The Department of Education recognises that working collaboratively with students and their families is the best way to support the regular attendance of students at school.

We look forward to working in partnership with you to support your child to fulfil their life opportunities.

Further information regarding school attendance can be obtained from the following websites

Policy, information and brochures

<http://www.schools.nsw.edu.au/studentsupport/programs/attendance.php>

The school leaving age

<http://www.schools.nsw.edu.au/leavingschool/index.php>

For further advice contact

Educational services

T 131 536

Learning and Engagement

Student Engagement and Interagency Partnerships

T 9244 5356

www.dec.nsw.gov.au

Do you need an interpreter?

If you need help with English and would like further information please call the Telephone Interpreter Service on **131 450** and ask for an interpreter in your language. The operator will get an interpreter on the line to assist you with your conversation. You will not be charged for this service.

©May 2015
NSW Department of Education



Council Road
Safety Officer
Carol Debs



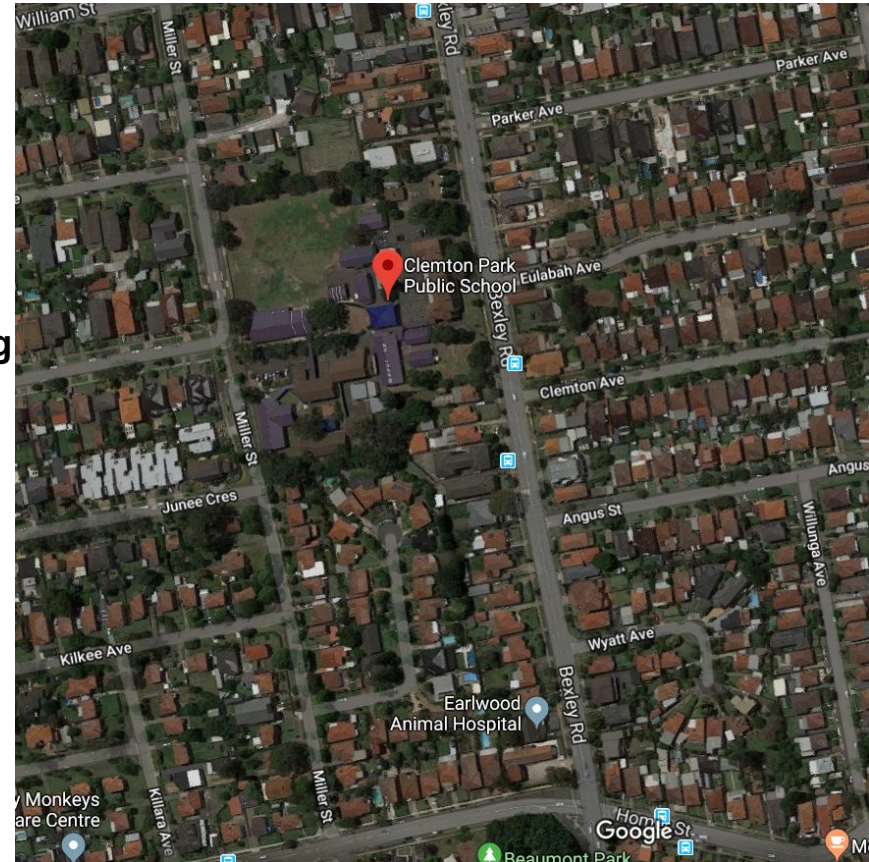
CLEMTON PARK PUBLIC SCHOOL

Road Safety Around Schools



HAVE A PLAN !

- **Plan ahead - it is less stressful to plan where you will park, drop off or pick up your children**
- **It is important that parents/carers teach their children how to be safe when arriving at and leaving the school grounds**
- **Give yourself plenty of time to find suitable parking once you arrive.**
- **Always obey parking signs around your School, they are there for a reason!**



KNOW the RULES - School Zone Parking Offences

Penalties that apply in School Zones



Drivers must not stop unless you are dropping off or picking up passengers. Maximum stopping time **2 minutes**, drivers must **stay within 3 metres of the vehicle**

Penalty \$191
2 demerit points



Vehicles are **not permitted to stop** on a length of road to which a No Stopping sign applies

Penalty \$344
2 demerit points



You must **not stop your vehicle** in the indicated zone unless you are driving a public bus

Penalty \$344
2 demerit points







Danger “Parents” in School Zone

- Drivers should always park legally around schools - obey the parking signs
- Don't block residents driveways
- Avoid dangerous manoeuvres like U-turns and three-point turns



SAFE PEDESTRIAN BEHAVIOUR

-  STOP.... one step back from the kerb
-  LOOK.... for traffic to your right left and right again
-  LISTEN.. for the sounds of approaching traffic
-  THINK.... whether it is safe to cross

DRIVERS should always give way to pedestrians at ZEBRA crossings, CHILDREN'S crossings and when entering and leaving driveways.





You must wear a SEATBELT . It's the LAW !



The driver of the vehicle is responsible for ensuring that all passengers are wearing a seat belt . Penalties and demerit points apply \$344 and 3 Points

Keeping Children Safe in the Car



Up to 6 months

Approved rear facing
child car seat



6 months to 4 yrs

Approved rear
or forward facing
child car seat



4+ years

Approved forward
facing child car seat
or booster seat



145cm or taller

Suggested minimum
height to use adult
lap-sash seatbelt

- Assist your child to buckle up – always check that the seatbelt is buckled up and not twisted
- Make it a rule that every passenger must have their belt buckled before you start the car

The driver of the vehicle is responsible for ensuring that all passengers are wearing a seat belt







Before and After School Care

Maria Stavroulakis



Gowrie

Meray Parsons



www.gowriensw.com.au





A Positive Start To School:

2019



Vision

Contributing to a **sustainable society** through being at the **forefront** of **early and middle childhood education and care** to **empower** and **support** children, families and professional educators.

Overview

In this information session we will:

1. Discuss our ideas around school readiness and the transition to school for children and families
1. Discuss how we can prepare ourselves and support children for school

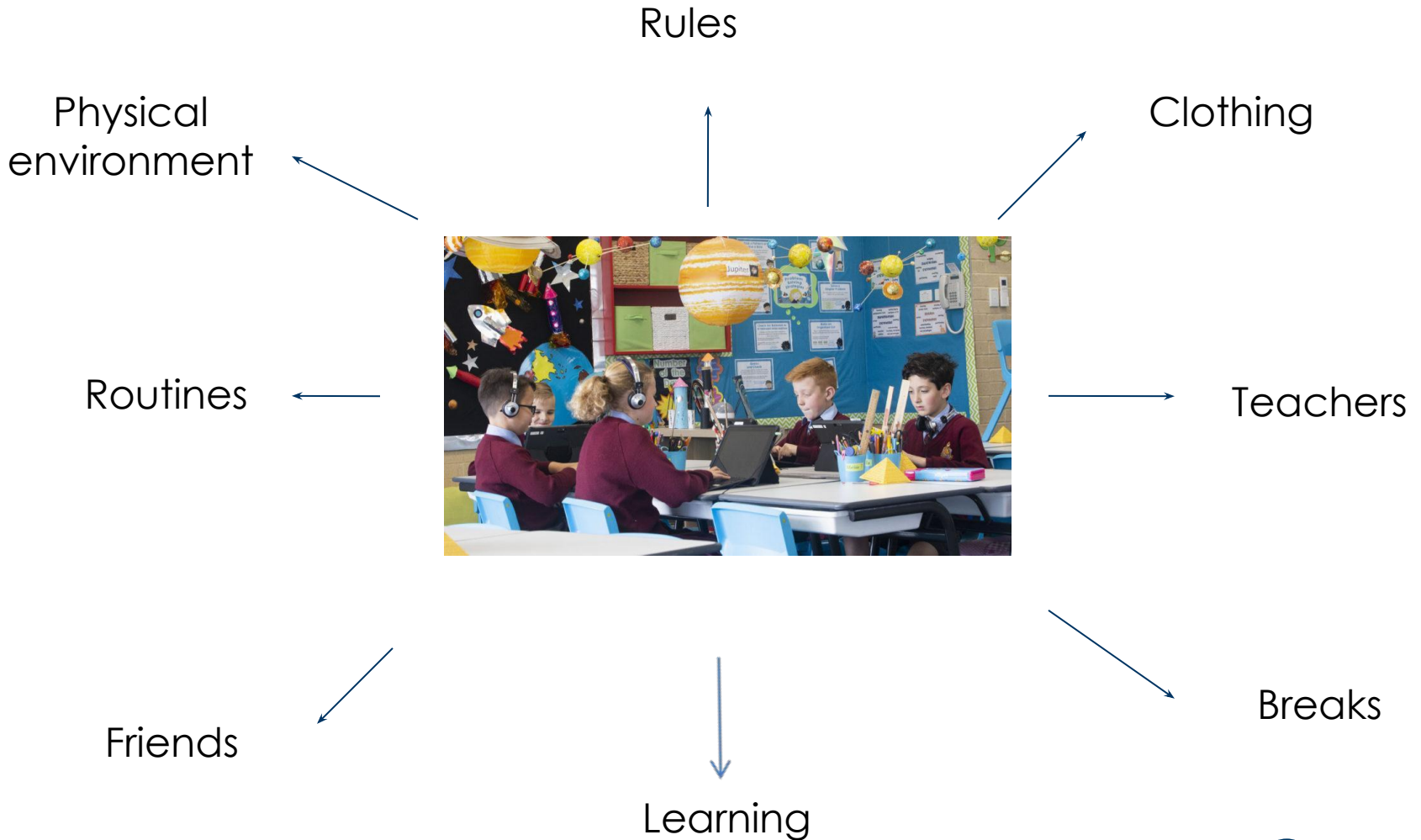
Engaging in a transition to school process is important because...

Children who make a positive start to school are more likely to:

- feel comfortable, relaxed and valued
- feel excited and motivated to learn
- have good relationships with others
- develop a sense of belonging within the school community.

<https://www.kidsmatter.edu.au/families/starting-school/1-thinking-about-transition-school>

Main changes for children at school



What is school readiness?



School readiness

Historically, school readiness has been seen as an outcome of maturation or chronological age, and has focused on particular qualities and capacities in the child. Once these were demonstrated (or achieved), the child was considered to be ready for school.

Your readiness

- Now consider your first day in a new job...
- How were you feeling, did you feel 'ready'?
- What did you need to know?
- What were you anxious about?
- What processes or information helped or could have assisted your 'readiness'?
- Think about this when getting your child 'ready' for school

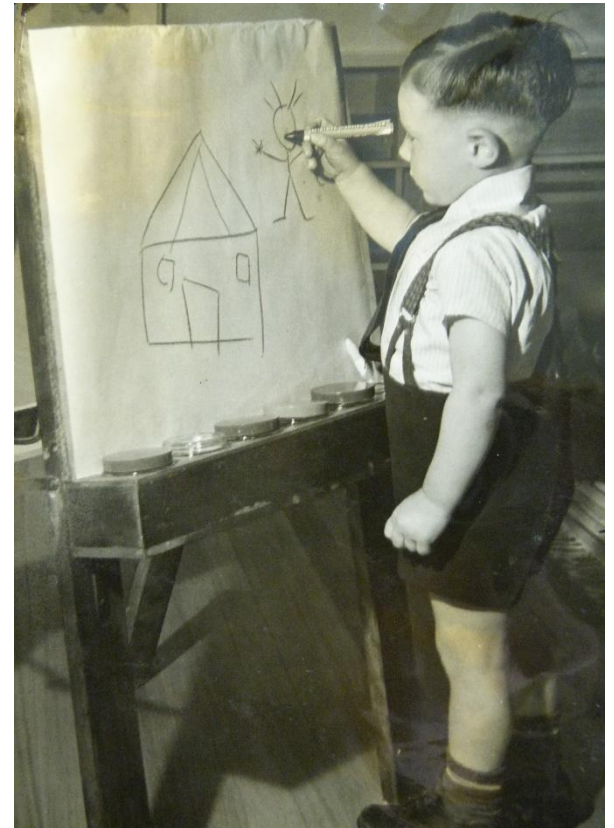


What is Transition to School?

Transition processes take a much broader focus and are collaboratively planned and evaluated by all involved. Transition is most successful when the context from which children come is considered within the new context.

A transition program can include:

- a set of planned experiences or a process established over a longer period of time.
- information sessions and workshops for parents
- ongoing experiences for the children



Starting School from a child's perspective...

Children generally start school with an understanding that they will learn how to:

- Read and write
- Work with others
- Learn rules and routines
- Make friends
- Listen to teachers
- Go to assembly
- Eat lunch
- Play sport
- Go to the library
- Attend Out of School Hours Care (OOSHC)



Of course these skills will develop at school but....

As parents and educators, we need to support children to develop positive self esteem BEFORE starting school. This will ensure that children:

- feel good about themselves and feel proud of what they can do
- believe in themselves and have resilience
- see their own good qualities, such as being kind or capable
- feel liked, loved, and respected
- accept themselves, even when they make mistakes



Ask yourself these questions?

- Does your child say goodbye and separate easily?
- Can your child go the toilet independently, without help?
- Does your child know how to remove and put on shoes, socks, jumpers?
- Will they remove and put on clothing when hot or cold?
- If they cannot find their lunch, school bag, hat at school, what would they do?
- Can your child sit and join in large group times for up to 30 minutes?
- Can your child adapt to many new environments', e.g. OSHC, library, school halls?
- Would your child talk to you and ask for help if they... can't hear or see the teacher, feel sad, are hurt, feel lonely, have no friends



Tips for supporting children

- Learn from other transitions already experienced, e.g. starting preschool, new baby, moving house
- Utilise your child's strengths and skills – every child is different, each has their own skills to help them with starting school
- Teach friendship skills, e.g. saying Hello, being friendly
- Encourage pro social skills – sharing, taking turns, collaboration
- Ensure your child has time to play with other children
- Involve your child in conversations about school and learning
- Teach them about responsibility, e.g. set small tasks like putting spoons on the table for dinner



Tips for supporting children

- Help your child to manage emotions, e.g. describe and label how they are feeling
- Develop children's understanding of social rules, e.g. different rules for different places
- Introduce literacy and numeracy awareness, e.g. point out numbers on street signs, read books often
- Help your child to stay focussed in an experience – start with something that interests them
- Encourage your child to ask questions when unsure
- Teach them how to follow simple instructions, e.g. pack away the lego
- Ensure they know how to engage in active learning experiences, Play!
- Encourage children to care for their belongings
- Encourage children to be independent with their self help, hygiene, meal times, allergies etc

Useful Webstes

Building your child's self esteem:

<http://kidshealth.org/en/kids/self-esteem.html>



Children's mental Health:

<https://healthyfamilies.beyondblue.org.au/>



Australia's Parenting website:

<https://raisingchildren.net.au/>



"You're off to great places,
Today is your day!
Your mountain is waiting,
so get on your way!"
-Dr. Seuss



Thank you



facebook.com/gowriensw



linkedin.com/company/gowrie-nsw



twitter.com/gowriensw

Content of Folders & Bags

- CPPS Information booklet
- Best Start, Literacy and Numeracy information
- Name badge - to be worn at each transition session & at the start of 2020
- Name & number practise & foundation font outline
- Student House colour
- Scripture/Ethics Class outline
- P&C Welcome information
- Canteen menu
- Language Background Other Than English questionnaire
- Compulsory School Attendance information
- DoE Getting Ready for School information
- Road Safety information
- Guidelines for healthy eating, lunch boxes and physical activity
- Before and After School Care
- Gowrie

Video Links

DoE Transition to School 1min 21sec

<https://education.nsw.gov.au/public-schools/practical-help-for-parents-and-carers/year-by-year/starting-primary-school#Video0>

What happens in Kindergarten 4mins 46sec

<https://www.youtube.com/watch?v=zh3h7galXDU&fs=1&hl=en%5FGB&rel=0>

Helpful Links

NSW Education Standards Authority (NESA)

<https://www.educationstandards.nsw.edu.au/wps/portal/nesa/home>

DoE - Parents and Carers

<https://education.nsw.gov.au/public-schools/practical-help-for-parents-and-carers>

Guest Speakers - Session 2

September 11th

- Paul Robinson - Principal (Rel.)
- Nicole Moss - P&C President
- Anna Skribias - Community Languages
- Therese Borg - Learning and Support Teacher
- Nadia Cannizzo - English as an Additional Language/Dialect
- Mary Nikolakopoulos - Teacher/Librarian & ICT
- Sally D'Arrigo - Deputy Principal (Rel.)
- Students from the SRC & EST

Guest Speaker - Session 3
September 18th

Peta Lloyd - Assistant Principal -
Early Stage One

School Tour

Guest Performers
Kindergarten 2019

Thank you for attending
Clemton Park Public School's
Session 1



2020 Kindergarten Transition

I look forward to seeing everyone
again next Wednesday for Session 2